

# CSU Health and Medical Center Update

DSA Directors Meeting – April 2017



## About the CSU Health Network

- Every student's on-campus home for health care
- **All enrolled students have full access** to our wide range of services, **regardless of their insurance plan**
- Employs providers who are passionate about and experienced in college health
- Accredited by the Accreditation Association for Ambulatory Health Care (AAAHC) and American Psychological Association (APA)





Medical Services



Counseling Services



Health Education and Prevention Services



CSU HEALTH NETWORK  
COLORADO STATE UNIVERSITY



## Medical Services

### General Medical Services

- Primary Care
- Urgent Care
- Behavioral Health
- Immunizations
- Laboratory
- Pharmacy
- Radiology

### Specialty Medical Services

- Allergy & Asthma
- Dental
- Men's Care
- Massage Therapy
- Nutrition Care
- Optometry
- Physical Therapy
- Psychiatry
- Sports Medicine/ Orthopedics
- Travel Medicine
- Transgender Care
- Women's Care



CSU HEALTH NETWORK  
COLORADO STATE UNIVERSITY

## Counseling Services

- Individual and couples
- Groups and workshops
- Drugs, Alcohol, and You (DAY) programs
- Post-hospitalization support (iTEAM)
- Crisis intervention
- Consultations with colleagues/parents/friends



## Health Education and Prevention Services

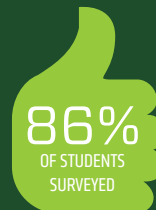
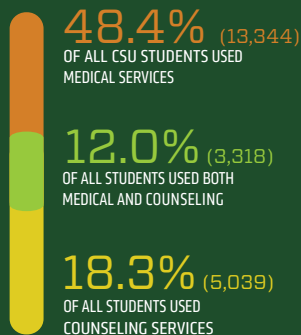
- Substance abuse prevention
- Mental health initiatives
- Peer Education (CREWS)
- Resiliency and Well-Being
- Sexual health initiatives
- Tobacco cessation
- YOU@CSU



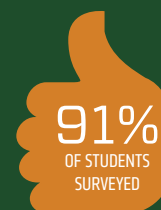
# CSUHN By the Numbers

15,065

STUDENTS USED SERVICES AT THE  
CSU HEALTH NETWORK



WOULD RECOMMEND CSU HEALTH NETWORK TO A FRIEND



WOULD RETURN TO CSU HEALTH NETWORK FOR SERVICES

100,015

TOTAL STUDENT ENCOUNTERS

6.6 AVERAGE ENCOUNTERS PER STUDENT



## Insurance & Access

**All students** have **full access** to services, regardless of their insurance plan





**Hartshorn Health Center**

*Opened in 1964 as an "infirmary" when CSU had approx. 9,000 students*



**Aylesworth Hall**

*Opened in 1956 as a residence hall*



**CSU Health and Medical Center**

4 floors  
113,000 square feet  
\$59 million

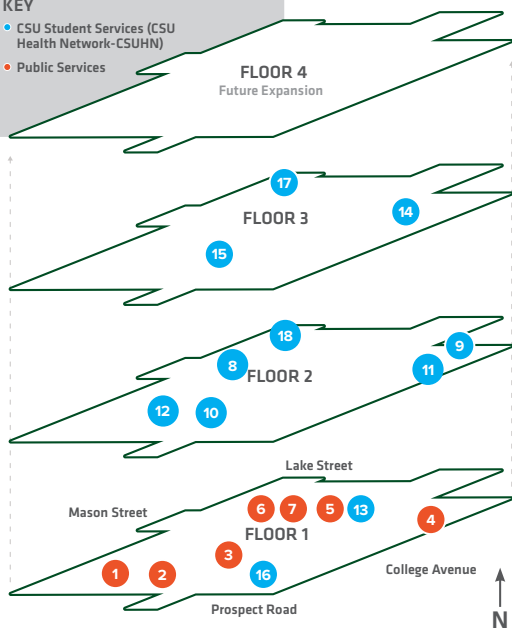


# Building Partnerships and Funding Sources



**KEY**

- CSU Student Services (CSU Health Network-CSUHN)
- Public Services



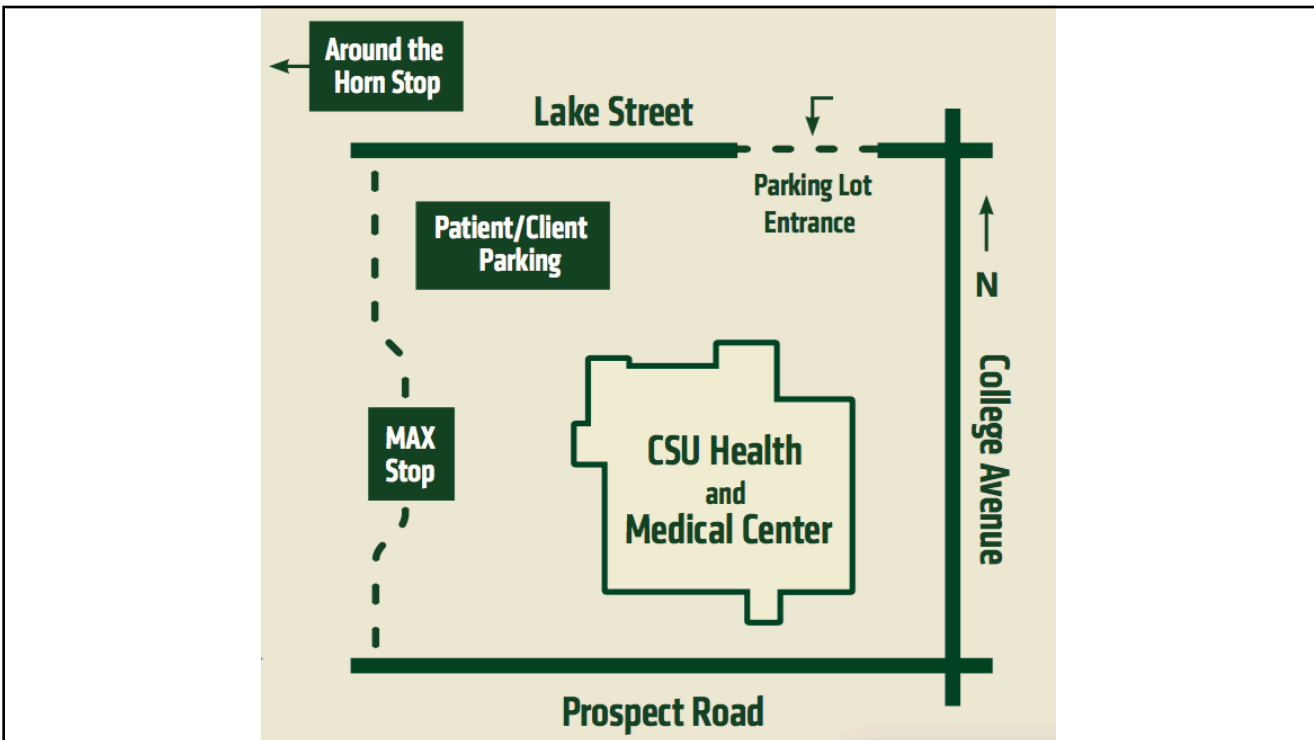
## SERVICES BY FLOOR

- |  |  |
|--|--|
| • 1. UCHealth Occupational Health Clinic               | • 10. CSUHN Medical Services                         |
| • 2. AFM Primary Care & Walk-In Clinic                 | • 11. CSUHN Optometry Services                       |
| • 3. UCHealth Radiology Suite                          | • 12. CSUHN Women's Clinic                           |
| • 4. Pharmacy  | • 13. Reflection Center                              |
| • 5. Kendall Reagan Nutrition Center                   | • 14. CSUHN Dental Services                          |
| • 6. Infusion Center                                   | • 15. CSUHN Counseling Services                      |
| • 7. Columbine Health Systems Center for Healthy Aging | • 16. CSUHN Physical Therapy Services                |
| • 8. CSUHN Laboratory                                  | • 17. CSUHN Health Education and Prevention Services |
| • 9. CSUHN Immunizations and Travel Clinic             | • 18. CSUHN Administration & Business Services       |



## Additional Building Highlights

- Central, four-story circular staircase
- Still Point Reflection Space
- Concierge/Info Desk
- Commuter showers
- Lactation room



## Key Dates

- **Thursday, June 15<sup>th</sup>** – last day of services in Hartshorn & Aylesworth
- **Friday, June 16<sup>th</sup> through Friday, June 23<sup>rd</sup>** – CSU Health Network closed for all services
  - Medical and counseling services coverage
  - Prescription refills
  - Ram Orientation coverage
- **Monday, June 26<sup>th</sup>** – CSU Health Network reopens for all services in new building
- **Wednesday, July 5<sup>th</sup>** – UCHealth and AFM open



## Open Houses/Grand Opening

- **Community Open House** – co-hosted by all building partners
  - Saturday, July 29<sup>th</sup> from 3-5 pm
- **Student Celebration Events and Campus Open House**
  - Monday – Friday in September 2017, dates TBD





Questions?